

Technical Data

cable glands

display with white backlight

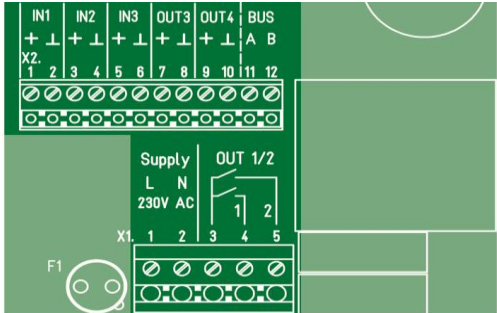
membrane key 4x

front view CT-20



View on terminal

Terminal inside:
Screw connection
5 pole, max. 1,5qmm
12 pole, max. 1qmm



Power supply, X1.1-2
IN 1-3, X2.1-6
Input resistor
OUT 1-2, X1.3-5
relays contacts
F1 (fuse contacts)
OUT 3-4, X2.7-10
BUS (Option), X2.11-12
Display
lightning
operation
Real-time clock, weekly prg.
Operating temperature
Housing
Weight
Dimensions

230V AC
PT1000, 0(2)-10V DC, 0(4)-20mA
200kOhm / 500hm
NO contact
max. 250V AC, max. 3A
1,6A T (miniature fuse TR5)
0-10V, max.10mA
RS 485, MODBUS-RTU.
LCD 3x16
backgroundf white
4x membran switch
battery-backed
-10 - +50°C
surface mounting, plastic, IP64,
ca. 310 g
120x98x50mm (BxHxT)

Connection:
X1.1 L 230V AC, line
X1.2 N " "
X1.3 relay contacts 1-2, Com.
X1.4 OUT 1,NO contact, function (3-step OPEN, limit value1)
X1.5 OUT 2, NO contact 2, nach Funktion (2-step CLOSE, limit value 2)
X2.1-2 IN 1, (PT1000 sensor 1, 0(2)-10V, 0(4)-20mA)
X2.3-4 IN 2, (PT1000 sensor 2, 0(2)-10V, 0(4)-20mA)
X2.5-6 IN 3, (PT1000 sensor 3, 0(2)-10V, 0(4)-20mA)
X2.7-8 controller- analog output 1, 0-10V
X2.9-10 controller- analog output 2, 0-10V
X2.11-12 RS 485 interface, BUS A-B (option)

Temperature or differential controller with 3x input (PT1000, voltage, current), 3-point and 2x 0-10V output. The controller functions, weekly program, setpoints, etv. can be set on display menu, depending on the application, see [AN C840](#). The CT-20 device is in a on wall mounting housing. The device CT-20 / MB has an additional RS485 MODBUS-RTU interface for controlling over PLC.

RINCK ELECTRONIC GMBH Kleekamp 6 D-27356 Rotenburg (Wümme) www.rinck-electronic.de info@rinck-electronic.de			CONTROLLER CT-20 / N	
			Power supply	230V AC
			IN 1-3	PT1000 Sensor, 0(2)-10V, 0(4)-20mA
			OUT 1-2	2x NO contacts
			OUT 3-4	0-10V DC
			Option	Interface RS485, MODBUS RTU
C 840	D_CT-20	20.11.15		