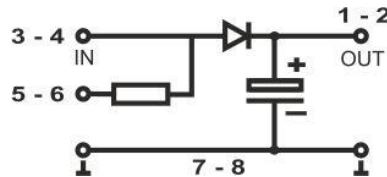




C 60000µF/35V

Terminal

- Plug terminal 6pin
8 pol., max. 2,5 qmm
- 1-2: + output (+capacity)
- 3-4: + input (diode anode)
- 5-6: + input (resistor)
- 7-8: - minus capacity



Technical Data

Input, pin 3/4, 5/6	diode anode
Output, pin 1-2	capacity +
GND / -, pin 7-12	capacity -
Diode, pin 3/4 -1/2	6A, (peak 150A)
Resistor	0,025 Ohm (10W) (or to order)
Capacity	
Standard capacity	60 000 µF
max. voltage	35 V DC
Capacitance tolerance	+ - 20 %
Operating temperature	-40 - +60°C
Storage temperature	-40 - +100°C
Construction	PCB mount., TS35, EN50022
Weight	140g
Dimensions	71 x 110 x 65 mm (WxHxD)

Capacitor unit for power supply failure, voltage fluctuation. The input is separated with decoupling diode. Pin 1-2 (output +), pin 3-4 (input +), pin 5-6 (input + with serial resistor) and pin 7-8 (capacity -) are intern jumpered. Attention: for reduce the input peak current, use the input resistor (pin5-6).

RINCK ELECTRONIC GMBH

Kleekamp 6
D-27356 Rotenburg (Wümme)
www.rinck-electronic.de
info@rinck-electronic.de

CAPACITOR UNIT C 60 000µF / 35V

Capacity 60.000µF, 35V DC or order other value
Input is separated with diode

A 034

E_C60000

20.11.15